



Tutorial

General Flickr Questions.....	2
Your Account	2
Content filters.....	3
Photos	4
Guest Pass.....	10
The Organizr	10
The Map.....	11
Using Flickr Tools.....	12
Public/Private	13
Tags.....	13
Collections	13
Favorites	13
Contacts.....	14
Yahoo! IDs, signing in and screen names.....	15

General Flickr Questions

Flickr is the best way to store, sort, search and share your photos online. Flickr helps you organize that huge mass of photos you have and offers a way for you and your friends and family to tell stories about them.

Flickr is for free, and there will always be a free version of Flickr. It will be limited in some ways, and you get more with a paid subscription, but it's still the same fun!

I'd like to use a photo I found on Flickr. How do I do that?

We don't act as matchmakers, so contact the photographer yourself. Only members of Flickr can send messages to one another, so if you haven't created an account, that's your first step.

As a member of Flickr, you can move your mouse over someone's buddy icon and click the little arrow to open the "person menu." Then select "Send FlickrMail" and compose your message. When you contact a photographer, it's best to include as much info as possible about the photo, yourself, and how you want to use the photo.

Your Account

Creating an account in Flickr

In order to log in to Flickr, you will need a Yahoo account.

Go to <http://www.flickr.com/> and click on Sign Up you will be redirected to another page.

On the lower right side of the page go to Don't have a Yahoo! ID? And click on Sign Up

Under Create Your Yahoo! ID fill in the required fields

Number of photos you can upload for free

When you have a free Flickr account, you can upload 100MB worth of photos each calendar month. This is a bandwidth limit, and not an amount of space that you have on Flickr servers. You can't recover any of your monthly allowance by deleting photos. If you have a free account, you'll see your limit on the upload page.

Note that on a free account, Flickr limits the number of photos displayed. If you have fewer than 200 photos, we display them all. If you have more than 200 photos, only the most recent 200 are displayed. Your photos are **not** removed from Flickr, only from the

list of your photos. If you blogged a photo and it no longer appears in your list, it will still appear on your blog, and the photo's Flickr page will still work just fine.

Note: If your free account is inactive for 90 consecutive days, it will be deleted.

Content filters

Content Filters

Flickr is a global community made up of many different kinds of people. What's OK in for you might not be OK for other people. Each one of us bears the responsibility of categorizing our own content within this landscape. So, we've introduced some filters to help everyone try to get along.

There are 2 types of filters that you need to use for your content.

1. Safety Level

- Safe - Content suitable for a global, public audience
- Moderate - If you're not sure whether your content is suitable for a global, public audience but you think that it doesn't need to be restricted.
- Restricted - This is content you probably wouldn't show to your mum, and definitely shouldn't be seen by kids

2. Content Type

- Photo
- Art / Illustration / CGI or other non-photographic images, or
- Screenshot -

When you upload content to Flickr, you need to choose where it "fits" in these 2 categories. For example, if you want to upload a screenshot of a web page, you can, but you need to flag it as a screenshot.

Putting your content into these categories means that everyone can then apply filters to searches they do to make sure they're seeing what they want to see.

SafeSearch

SafeSearch is a feature that allows you to control what turns up in your searches on Flickr, and it's on for everyone by default.

If you are a Flickr member, you have the option to configure the level of SafeSearch you'd like. Here's how it works:

- If you aren't signed in to Flickr, SafeSearch is always on,

- If you are signed in and under 18, you can elect to have SafeSearch on, or SafeSearch moderate, and
- If you are signed in and over 18, you can choose to have SafeSearch on, off, or at a 'moderate' setting.

SafeSearch filters also apply when you're browsing around. For example, if you come across a photo that's outside your SafeSearch, you won't see the image. (If you're signed in, you will see an option to click through to see it, unless the content has been flagged as 'restricted' and you're under 18.

Reviewing your account

When you open a brand new Flickr account, your photos won't show up publicly (in search results or pages that show photos tagged with something) until your account has been reviewed. Once your account has been reviewed, you'll be able to see your "status". We have thousands of people signing up every day on Flickr, so it may take a week or two to review your new account. In the meantime, your photos are not completely invisible. You can still share public photos you've uploaded to Flickr by giving people the link to Your Photos page. After being reviewed, your account will be flagged: **Safe** which means that you are good at moderating your own content. **Moderate** having a "moderate" flag on your account probably means that you are generally a good self-moderator, but occasionally things pop up in your photostream that may be in the wrong categories. **Unsafe** it's not clear to us that you're moderating your own content at all, or if you are, you're not bearing in mind that there are other people using Flickr and that it's up to you to not be overtly offensive.

Safety level on my photos

You can set a default safety level for photos you upload. Whatever you set here will carry through to any/all upload methods you use.

You can also change whatever default you've set per photo or batch as you upload, and after your content is uploaded. There are batch editing tools available in the Organizer, and on the page where you see one of your photos, there's a "Flag your photo" link under the Additional Information heading where you can also change the safety level, or see if the photo has been reviewed by Flickr staff.

Photos

Uploading my photos

Flickr provides a range of uploading tools for both Windows and Mac that will help you get your photos online.

You can also email your photos to your Flickr account. You have your own unique email address that you can use to add your photos to your Flickr photostream or to upload photos to your Flickr photostream **AND** automatically post them to your blog.

If you'd rather not install our tools, you can use a web form to upload up to six photos at a time on the upload page.

Limit on the number of photos

There is no limit to the number of photos you can have. But if you have a free account, you'll only see the most recent 200 photos displayed. With a free account, you can upload up to 100MB per month. You can see how much you've uploaded on the upload page. If you upgrade to a Pro account, all the photos you add to Flickr will always be available to your friends and family.

Limits on file sizes or file types for uploads

With a free account, you can upload files up to 5MB in size. If you have a Pro account, you can upload files up to 10MB.

Flickr officially supports JPEGs, non-animated GIFs, and PNGs. You can also upload TIFFs and some other file types, but they will automatically be converted to and stored in JPEG format.

As you publish photos, they're compressed and resized by Flickr (if necessary) in the following sizes:

- 75x75 pixels
- 100 pixels (on the longest side)
- 240 pixels
- 500 pixels
- Large (which will be 1024 pixels if it exceeds that length)
- The original size (if you have a pro account)

To access all of these sizes for a photo, click the "All Sizes" link below on the individual photo page or the "See different sizes" link below the Additional Information heading.

Flickr resizes your photos to more web-friendly dimensions. Each image has a 75x75 pixel thumbnail and 100-, 240-, 500-, and 1024-pixel versions (that's the length of the longest side), as well as your original file.

When you view an individual photo page, click the "All Sizes" link below the photo title to view or download each of the sizes.

Sharing of photos

Anyone who uses Flickr can see your public photos. Here are some other ways to share:

- Set up your own Flickr web address (like <http://www.flickr.com/photos/rabih/>) and share it with all your friends
- Send individual photos to people, either as attachments to an email or as a link to a Flickr page
- Add tags to your photos so anyone searching the Flickr collection can find them
- Add your photos to a group

Sharing of photos with just friends and family

1. Set your photos to be visible to only your friends or family (that is, not public). You can choose this option as you upload your photos, for individual photos already uploaded, by using the Organizer, or as the default setting for all your uploads.
2. Mark people as friends and family on Flickr. You can do this when you invite them or by using the Person menu to select friends and family members who are already Flickr members.

After you mark your family and friends and set the appropriate privacy level on your photos, your family and/or friends can see your photos under the "Contacts" link at the top of each page.

Can anybody comment on my photos?

Most of the time, yes, unless you say you don't want them to.

If someone leaves a comment that you don't like, you can delete it. You can also block a person from commenting on any of your photos.

"Flag your photo" link on my photo page

Click on it! It opens up a little widget where you can change the filters you're applying to each of your images: Content Type and Safety Level.

 This photo is public ([edit](#))

Flag your photo

[Cancel](#)

Hide this photo from public searches

<input checked="" type="radio"/> Safe (default)	<input type="radio"/> Photo (default)
<input type="radio"/> Moderate	<input checked="" type="radio"/> Screenshot
<input type="radio"/> Restricted	<input type="radio"/> Art/Illus.

[SAVE](#) [Need help?](#)

Privacy levels

You can specify a privacy level as you upload photos using the form or Uploadr or by email). You can choose: Public, Visible to friends, Visible to family, or Private. You can also set a default privacy level for all your uploads. To change the privacy levels on photos you've already uploaded, batch them in Organizr, then click "Permissions" and select "Who can see, comment, tag?"

Privacy Uploading by Email

With the upload system, you can add a little bit of text (the pink bits below) to your Flickr email address (the green bits below) to set privacy levels as you upload. These permissions will override the default upload permissions you set.

Let's say your magic email address is **foo13bar@photos.flickr.com**. Then you could use:

foo13bar+friends@photos.flickr.com - Visible to friends

foo13bar+family@photos.flickr.com - Visible to family

foo13bar+ff@photos.flickr.com - Visible to friends and family

foo13bar+private@photos.flickr.com - Only visible to you

Photostream

Your photostream is a visual history of everything you've ever uploaded to Flickr. Everyone who sees your photostream enjoys a different view, depending on their relationship to you and your privacy settings. For example, your family may see images in your photostream that only they can view.

Your photostream always shows your most recently uploaded photos first. If you want to change the order, you can edit the posting dates for photos.

Creating Sets

It's really easy to collect your favorite shots together using Organizr. You can make a set of photos and display them in a certain order. You can also choose one photo in the set to use as the primary photo (this will be displayed anywhere on Flickr that there's a link to your set). Each set can have a name and description too. If you have a free account, you can have up to three sets.

How can I add tags to photos I upload via email?

Just type "tags:" in the subject line or body of the email followed by the list of tags you want added to the photo(s). (The rest of the subject line is converted to the photo's title and the body of the email becomes the photo's description.)

Here's an example of adding tags in action.

Subject:	Lucy, my new cat tags: cute "black cat"
Body:	Lucy does the funniest dance moves! Isn't she cute?

Or you could send them in the body:

Subject:	Lucy, my new cat Lucy does the funniest dance moves!
Body:	Isn't she cute? tags: cute "black cat"

(If you include tags in the email body, they must be at the beginning of a new line.)

Copyright

Remember that *you can only copyright images that you own*. This means you can't copyright images that you've taken from somewhere else! Additionally, just because an image does not have a Creative Commons license attached to it, doesn't mean that it is public domain.

To add a license for a specific picture, click the "Change" link next to your current photo license (usually set to "All rights reserved") near the bottom of your photo page. On the

Privacy and Permissions settings page, click the "Add a license to your photo" link on the right side of the page, near the bottom. On the next page, select one of the Creative Commons licenses.

Restrict the downloading of photos

You can set a global preference that controls who can download all the versions of your photos. Just select a setting — from "Only Me" to "Anyone." This setting applies to all your photos and is combined with your privacy settings.

If you applied a Creative Commons license to your images, then by default your images can be downloaded. If you don't want your images to be downloaded, don't apply a Creative Commons license to your images.

Downloading a photo

Select the photo and click the "All Sizes" button above it. On the next page, choose the size you want to download. Bear in mind, you may not have permission to download the original file.

Rotating a photo

To rotate a photo, select "Rotate" from the menu above the photo. A menu will pop up and you'll be able to rotate the photo left and right until you reach the correct orientation. Please note that rotating a photo will change the image file name.

Huge images opening out black

This problem happens with some images that are very large — more than 15,000 pixels on either dimension or more than 250MB in total size when decompressed. These numbers may vary depending on the image and/or the software you use. Sometimes you can open the file but aren't able to do anything with it afterwards. This is because the Flickr image tools must be able to both read the image and allocate resources for scaling and enhancing it. Try scaling your image to 90% or 95% of its original size — often that works.

How do I get the URL of a photo?

To use the URL of a photo (like when you add a photo to your Blogger profile), you must provide the web address (URL) of the image itself, not the address of the web page where the image is displayed.

Here's an example of a correct URL for a photo. Note the .jpg at the end:
» http://www.flickr.com/photos/132375_0ca82ae31e.jpg

Here's an example of an incorrect URL for a photo. It points to the web page where the image is displayed, not the image file itself. Notice there's no .jpg at the end.
» <http://www.flickr.com/photos/eric/132375/>

Guest Pass

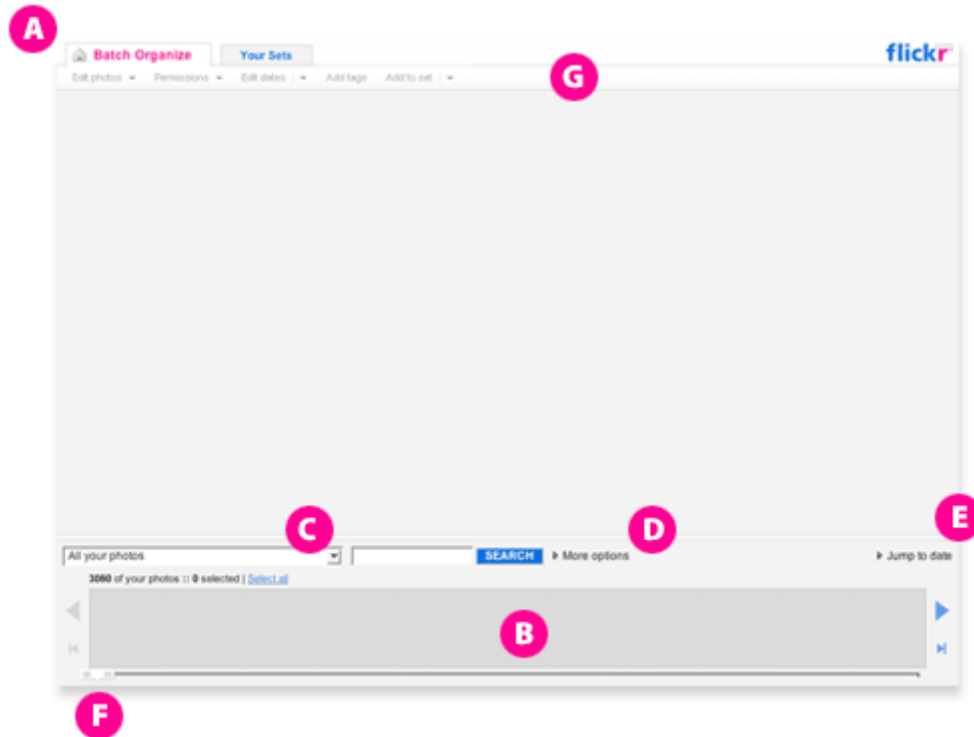
Share photos with non Flickr members

You can share public photos in your photostream by copying the URL in your browser's address bar and pasting it an email. Anyone can see your public photos anytime, whether they're a Flickr member or not.

But if you want to share *private* photos with people, use a Guest Pass. You can grant anyone access to the entire contents of one of your sets, including any private photos it contains. A Guest Pass is actually just that URL. This means that whoever sees that URL can access the set and all the photos inside it.

The Organizer

This is a screen shot of the Organizer



A Organizr is a powerful tool for managing your photos in batches or using sets. (You can also edit photo-related stuff one photo at a time.)

To access Organizr click the "Organize" link at the top of any Flickr page. In Your Photos, click the "Edit this as a batch" link to open Organizr with the batch loaded for you, ready to go.

Findr

When you open Organizr, your most recent photos will be visible **B**, newest on the left, older on the right. To navigate photos in Findr either click the previous and next arrows or drag the slider **F**.

You can filter your photos using the drop-down menu in combination with the search box **C**. There are more options available like filtering by privacy **D**. So, combine all these things and you can find "All my private photos tagged with 'dog' and 'rainbow' and sort them by the date they were taken."

To skip to a specific date in your photostream click the "Jump to date" link on the right side **E**.

The Organizr Toolbar **G** changes depending on the tab you're working in. Each menu drops down to reveal lots of options for working with your photos.

Drag & Drop

You can drag photos from Findr into a batch or a set. To remove photos from a batch or a set, drag them back over Findr and drop them. You can also drag a photo from Findr and drop it into a set when the Your Sets tab is open.

The Map

Geotagging

Geotagging is the art of adding location information to things like a photo. You can geotag your photos using Organizr by dragging and dropping them on to the map where you took them.

Adding photos to a map

Open Organizr and find the photo(s) you want to place on the map using Findr. Click the Map tab. Then, go to a location where you took your photo(s) by using either the "Find Location" box in the top right of the tab or the pan/zoom tools to browse to the location. When you've found the location, drag the photo from Findr and drop it on the map.

Using Flickr Tools

Flickr offers a range of tools you can install on your computer to make uploading your photos easier. You can drag and drop photos from your hard disk into Uploadr, and then publish them straight to your Flickr account.

There's also an upload form on the Flickr site, but you can only upload six photos at a time using that.

Windows Uploadr

First, install the Uploadr program on to your computer. Go to the Tools page, and download Uploadr for Windows. Once it's downloaded, double-click it to install the program.

Next, connect Uploadr to your Flickr account. When you open Uploadr for the first time, you'll be asked to authorize Uploadr to connect to flickr.com. Make sure you're logged in at flickr.com so Uploadr knows who you are.

To upload a photo with Windows Uploadr you can either drag and drop a photo from a folder on your computer into the white area of the Uploadr screen or click the '+' button to browse for the photos you want to upload.

When you've chosen the photos you want to send to Flickr, click the Upload button. (You can also choose tags for the photos, set their privacy, resize them, and add them to a set before you upload them.)

Mac OS Uploadr

First, make sure you have the latest version from the Tools page. Now, double-click the file you downloaded and put the application into your Applications folder/directory. Open Uploadr and you will be asked to authenticate Uploadr to access your Flickr account. Follow the instructions, making sure you are logged into Flickr at the same time, so Uploadr knows who you are.

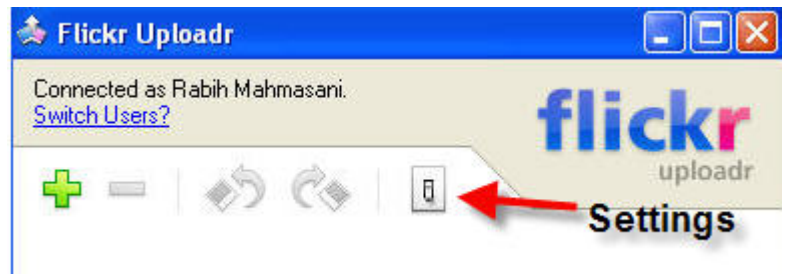
To upload a photo with Mac Uploadr after installing Uploadr, you choose the method to get your photos into the Uploadr window. You can either drag and drop them in the Photos pane or click the '+' button to select them individually.

When you have a few photos there, click the Upload button to send them to Flickr. You can add tags, set their privacy, and assign them to a photose, individually or in a batch.

Why am I not able to upload?

If you are connecting from within AUB you need to modify the proxy setting.

- Click on Settings
- Select Proxy Settings
- Tick **Use a proxy server**
- Next to address type: **proxy.aub.edu.lb**
- Next to port type: **3128**
- Then provide your AUB username and password the click on **ok**.



Public/Private

Photo Privacy setting

Every photo has its own privacy settings. You can make a photo available to everyone (that's public, and includes people visiting the site who aren't Flickr members); make it visible only to your friends, your family, or both your friends and family; or keep it completely private. Bear in mind that *you* can always see every image in your own photostream.

Tags

Tags are like keywords or labels that you add to a photo to make it easier to find later. You can tag a photo with phrases like "Rabih Mahmassani hiking mountain trail." Later if you look for pictures of Rabih, you can just click that tag and get all photos that have been tagged that way.

Collections

Difference between a collection and a set

A set contains photos. A collection can contain sets (or other collections).

Collections are only available for pro account holders

Favorites

Favorites are photos by other people that you want to bookmark in Flickr, so they are easy to find later. You can add any photo that you can view to your favorites.

Marking a photo as a favorite

On the photo's individual page, click the "Add to Faves" button above the photo. (To remove a favorite, click that button again.)

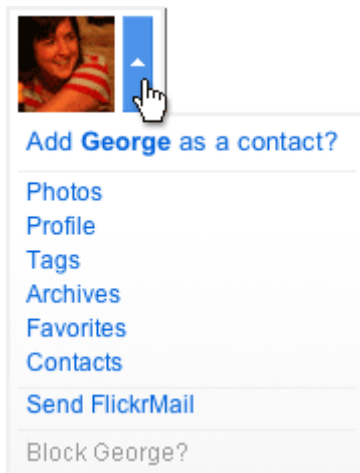
When another person looks at your favorites, they will only see all the public photos in your collection, and any photos they uploaded, regardless of the privacy.

Contacts

When you upload a photo, you can choose to share it with people you know as part of your contacts.

Adding a contact

There are two ways to add a contact. Move your mouse over their icon, click the drop-down arrow next to it, and select the "Add" option, like this:



Or, when you view a person's profile page, click the "Add [user name] as a contact" link in the upper right of the page.

Different types of contacts

You can mark anyone you meet or invite in Flickr as a contact. You can organize your contacts into friends, family, or friends and family.

There is a limit of 3,000 non-reciprocal contacts in Flickr. This does **not** affect how many people call you a contact (also known as "reverse contacts") but the number you can add to your own contact list.

Inviting friends into Flickr

There's a link to invite your friends in the Contacts menu. As you add people to an invitation, you can mark them as a friend or family. When someone accepts your invitation, they'll be made your contact automatically, and we'll send you a FlickrMail to let you know they've arrived.

Invitation to join a group

You can invite your friends to join any Flickr group you belong to. Just go to the group, and click the "Invite your Friends" link. (If they accept, we'll add them as your contact and stuff too.)

Groups

Sharing photos with a group

If you're a member of the group, add your photo to the group pool. (If not, join the group, because only group members can contribute to the group pool.) The easiest way add a photo to a group is to go to the photo's page and click the "Send to Group" button between the photo title and the photo. Then choose the group you want to send it to, and you're done!

Yahoo! IDs, signing in and screen names

Everyone will have to use a Yahoo! ID to sign in to Flickr.

Do I have to have a Yahoo! account to sign up for Flickr?

When you sign up for a new Flickr account, you'll need to sign in with your Yahoo! ID. If you don't have a Yahoo! account, you can create a new one by clicking the "Sign Up" link Yahoo! sign in page.

What happens to my Flickr photos if I delete my Yahoo account?

If you sign in to Flickr with a Yahoo! ID and you then delete your Yahoo! account, you will not be able to sign in to your Flickr account. In the future, this will delete your Flickr account as well, including all of your photos, but currently your Flickr account must be deleted separately.

Reference: <http://www.flickr.com/help/faq/>